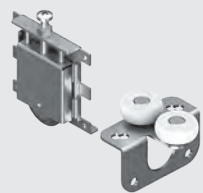




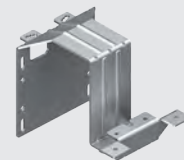
Nova System. Accessories



Wheels Set
NOVA



Brackets
for Inner Door



Brackets for
Outer Door Roller

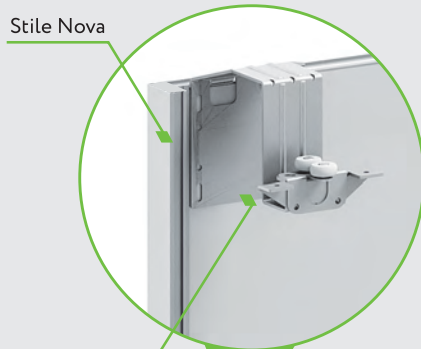


Door Soft
Closer Left/Right



Handle Nova
L=200 mm

Option with Hidden Top Track



Stile Nova

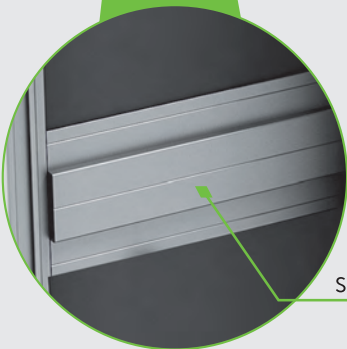


Horizontal Rail

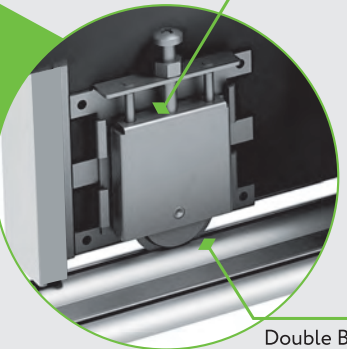
Brackets for Outer Door
+ Top Roller

Door Back Side

Brackets for Inner Door
+ Top Roller



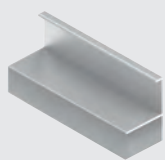
Support Profile



Bottom Roller

Double Bottom Track

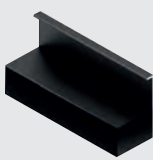
Nova System. Profile Range



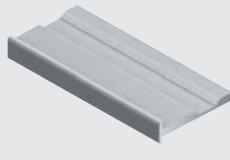
Stile Nova
Silver Matt



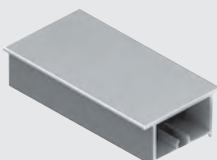
Stile Nova
White Glossy



Stile Nova
White Glossy



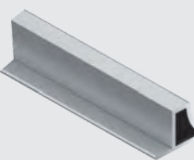
Horizontal
Rail



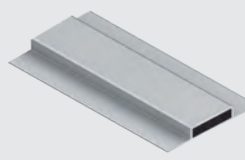
Dividing
Rail



Handle
Rail

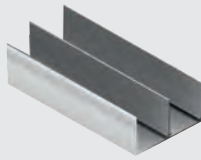


Handle
Insert Profile

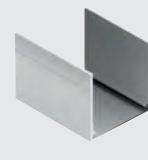


Support
Profile

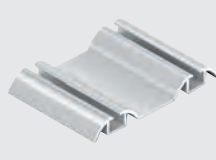
Standard System. Elements*



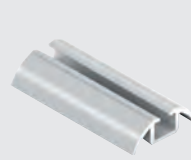
Double Top
Track



Single Top
Track



Double Bottom
Track



Single Bottom
Track



Weather
Strip



Dust Protection
Gasket



Weather
Strip PU



Single Bottom
Track End Cover,
Metal



Double Bottom
Track End Cover,
Metal

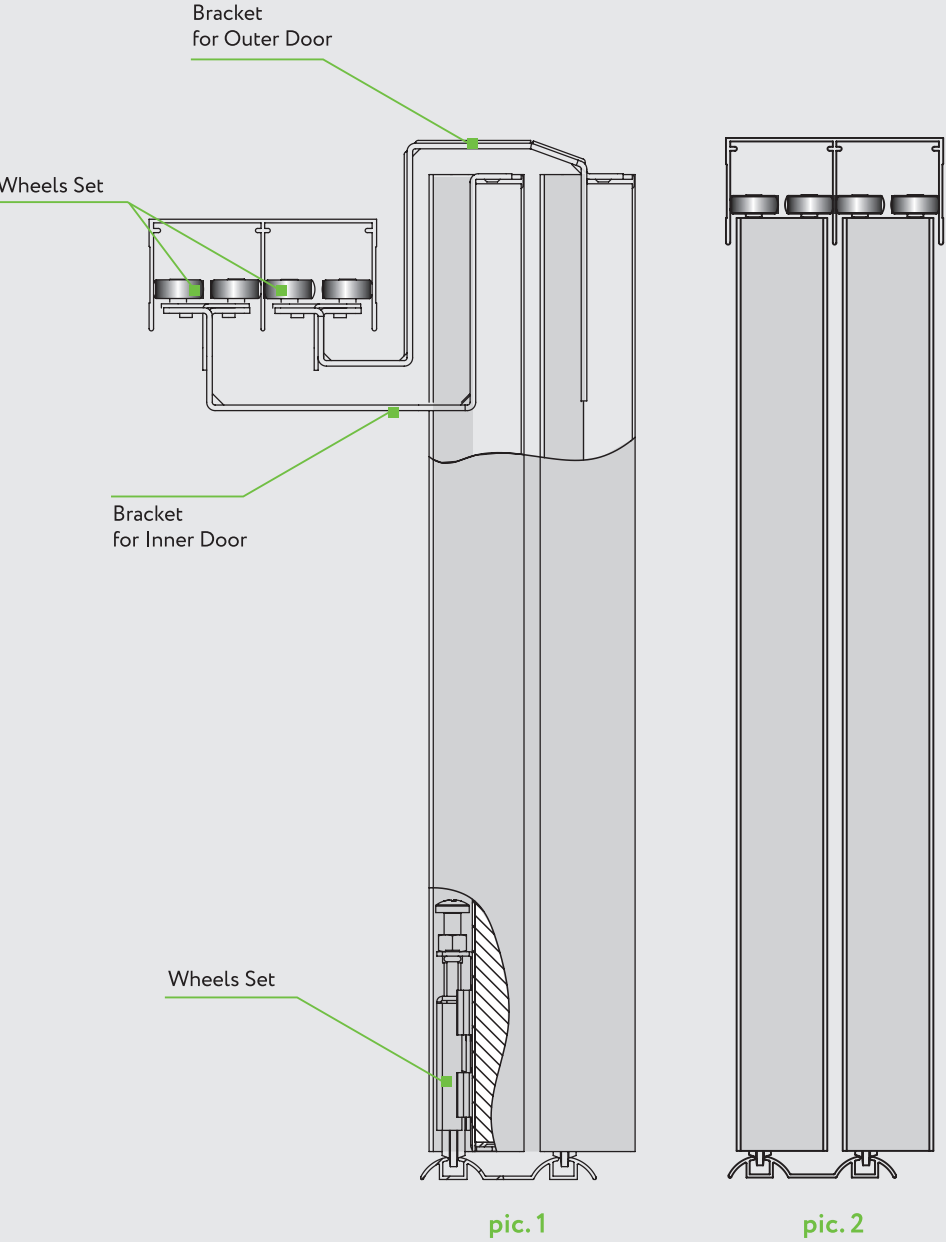
Permissible size and weight of doors, partitions			
	Door Height, mm	Door Width, mm	Door Weight, kgs
Nova Sliding System*	up to 2600	500-1500	up to 80

*For sliding doors and partitions the permissible height- to-width ratio is no more than 4/1 (recommended-3/1)

*Elements of the Standard system used in the NOVA system

Bottom based system,
at the same time three installation options are possible:

- Hidden, in the lintel (pic. 1)
- Hidden, in the cabinet (pic. 1)
- Standard, into the track (pic. 2)



In addition, two facades types are possible -
supplementary and consignment note.

www.aristo.expert

ARISTO[®]
aluminium
profile system

Geometry
and Practicality

- NOVA system is an innovative solution based on standard components.
- Our newest generation of profiles is remarkably slim and therefore discreet, elegant and modern. The width of its visible front is only 5 mm.
- Reliable construction is made of safe materials, the framing elements are 1.6 mm thick and the lower rollers support weights up to 80 kg.
- Three installation options are available: standart (into the track); hidden (in the lintel); hidden (in the cabinet). Hidden options mean that top track is invisible.
- The smooth and silent course of the doors is ensured by unique dust protection gasket.
- Large selection of panels and profile colors provide diversity of design solutions.



Nova
System